

FUTURA[®]
T O O L S & T E C H N O L O G Y
SiteMetrix[®] Grade

Precision & Reliability
at an **Affordable Price**

Performance | Simplicity | Value

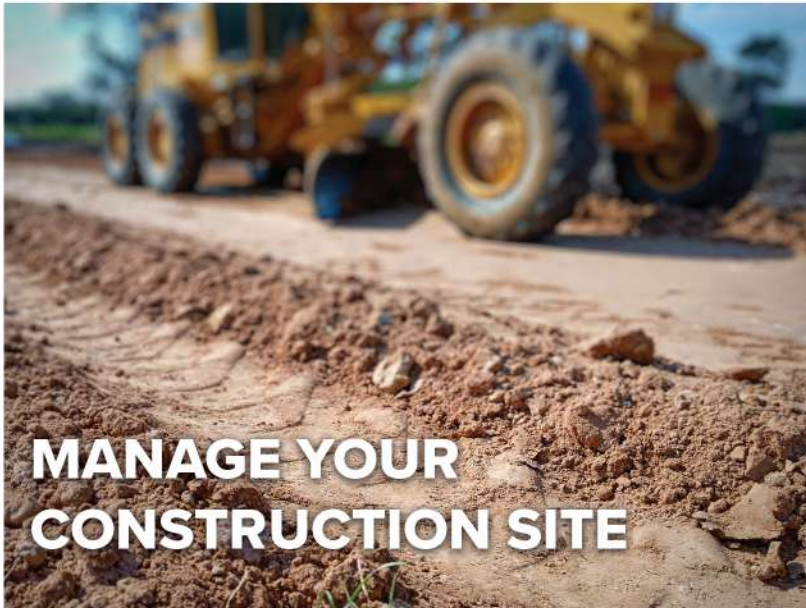


UNPRECEDENTED VALUE FOR SITE MANAGEMENT

SiteMetrix® Grade Site Management

Futura's universal construction site supervisor system, including SiteMetrix® Grade and the all- new multi-frequency, multi-GNSS F631 RTK base and rover is the ultimate tool to help you manage all of your job site activities. SiteMetrix® is designed to be user friendly, easy to understand. and portable.

Use the system to localize sites, check grade, configure base stations, set your own stakes, and calculate volumes of material removed, resulting in significant ROI for your operations right away.



Your Benefits At A Glance

- Reduce costs by setting out and checking grade in-house
- Minimize external survey fees
- Calculate volumes of stockpiles / calculate volumes of material moved
- Obtain real-time estimates of volumes, material used, and percentage of job completion
- Create files of completed areas of projects
- Check grade from your truck with supervisor mode
- Finish Jobs faster and more efficiently with less cost and material

SiteMetrix® Grade Key Features

- Easy-to-use interface
- Stake out design points on your site
- Collect as-built features of your site
- Collect topo shots to create surfaces for volume comparisons
- Configure, convert, and manage files for Futura GradeMetrix® machine control systems
- Create pads, slopes, and ramps for either stand-alone or for upload to GradeMetrix® machine control systems
- Network RTK compatible
- Supports common generic file formats; DXF, DWG, and LandXML





F631 Ruggedized Base/Rover

- Multi-frequency, Multi-GNSS GPS/GLONASS/BeiDou/Galileo/QZSS/SBAS/WAAS capable (all standard)
- Integrated 400/900 MHz dual band SATEL radio
- Supports both UHF and spread spectrum frequencies
- Powerful WebUI with serial, Bluetooth and Wi-Fi connections
- Integrated global cellular modem
- Integrated IMU for tilted pole measurements
- Athena® RTK engine provides best in class GNSS performance
- Supports long-range 50Km RTK baselines



SUREFIX® RTK

SUREFIX® RTK - Is a ground-breaking solution offering a real time, dual solution point verification.

With SUREFIX® RTK, crews can be assured the shot they take is a true solution every time..



Ruggedized Hardware

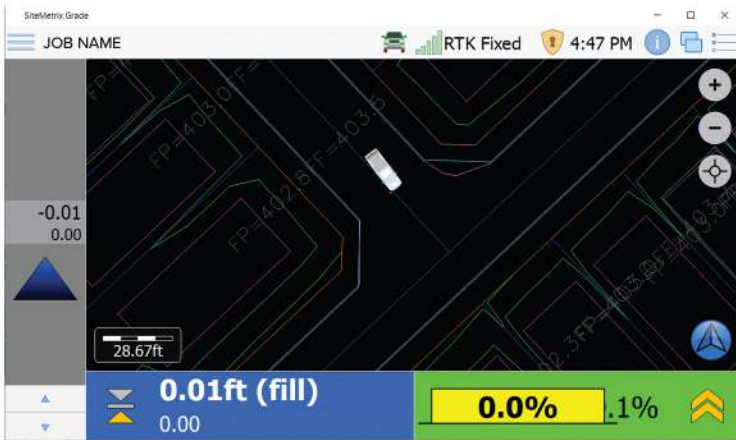
Futura's F631 operates as both a rugged base station for your machine control job site and a site rover providing site management, grade control, and construction staking activities.



FT20 Windows Tablet

- IP68 and MIL-STD-810G rated tablet
- Sunlight viewable display
- Microsoft Windows 10 operating system
- Bluetooth, Wi-Fi, and cellular modem connections
- 8GB RAM and 128GB storage

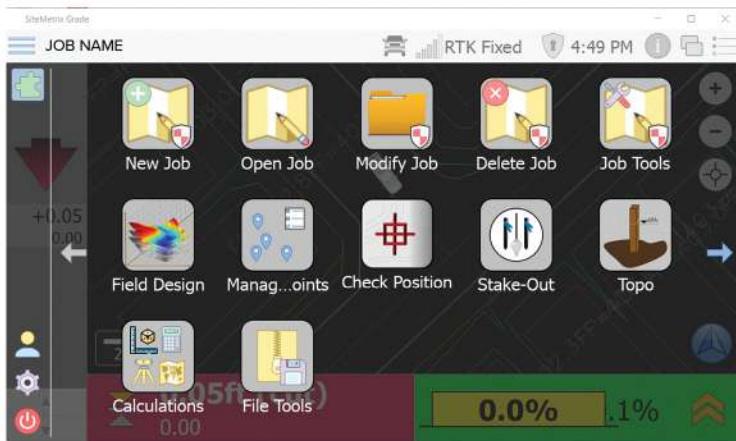
Performance - Simplicity - Value



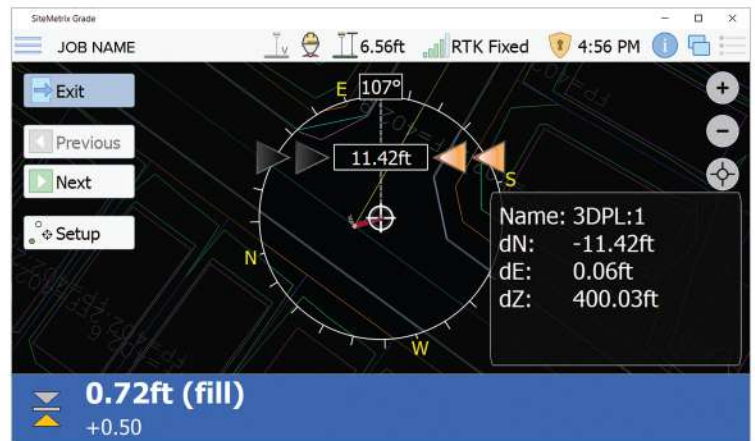
Supervisor mode allows you to drive the job.



Easily stakeout linework with guideline feature.



User-friendly interface allows you to navigate through the software with ease.



Point stakeout gives you the peace of mind that your job is done accurately.

Your Local Dealer



For more information
on Futura 3D solutions

COPYRIGHT © 2022 INTEQ DISTRIBUTORS. ALL RIGHTS RESERVED.

Futura

624 Krona Dr., Suite 110
Plano, TX 75074

Telephone: 1-405-789-9900

Toll Free: 1-877-399-9900

Fax: 1-405-470-1772

www.futuraus.com